



Disaster Risk Management in India

Coordinated Capacity Building for Institutions and the Media

India has experienced massive economic and associated urban and industrial growth in recent decades. Increasing demands for space and natural resources, coupled with threats posed by climate change, can expose local populations to increasing environmental risks.

Numerous institutions have already been established in the areas of natural and industrial disaster risk management, and have grown significantly over the past few years at both national and state level.

Following on from the Disaster Management Act (2005), disaster management institutes have been set up to promote capacity building for decision-makers from government, disaster mitigation agencies and other institutions.

GIZ supports project partners and collaborating institutions and facilitators in conceptualising modular capacity building programmes, establishing a cascade system of training providers, conducting prototype capacity building components and facilitating adjustments in disaster risk management to climate change and environmental and industrial hazards.

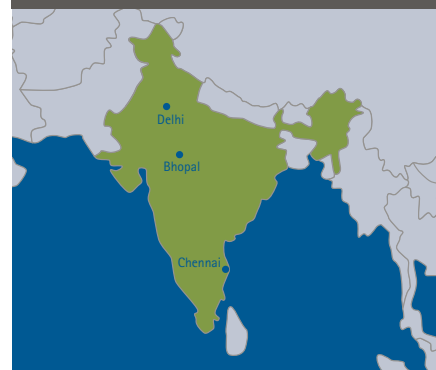
The diversity and complexity of these activities make professional management and

co-ordination a must. One core element of the project has been the implementation of an internet-based decision-support system for human resource development that is based on an open source software. It serves to announce and document all capacity building measures such as training courses, awareness campaigns, seminars, workshops, study tours and conferences. An integrated user-feedback tool helps evaluate ongoing activities and detect training gaps.

Special attention is also paid to press officers and media representatives. Both play a crucial role in raising public awareness of possible risks, preparedness and mitigation measures. They need to agree upon standards of operational procedures and work hand in hand informing and reassuring victims of an ongoing disaster. Journalists also have their watchdog role to fulfil and make sure that lessons from previous disasters are taken seriously.



The Indian subcontinent is one of the regions in the world most threatened by the impact of climate change. Floods, droughts and landslides, as well as shifts in the monsoon rainfall pattern there, endanger human life and health, infrastructure, agriculture and economic development. Chemical and industrial disasters pose an additional threat to the country.

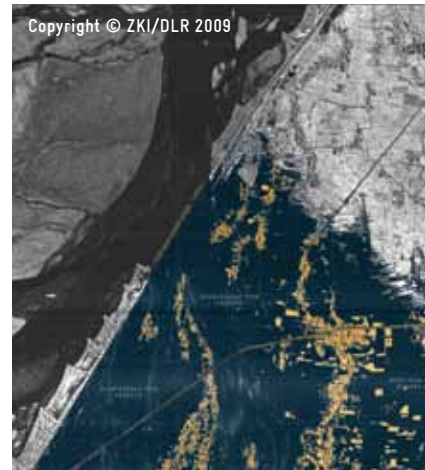


GIZ (former InWEnt) started working in the field of Disaster Risk Management in India in 2001 under the Advisory Services in Environmental Management (ASEM) joint programme sponsored by the German Technical Cooperation (GTZ) and the Government of India's Ministry of Environment and Forests. Since 2008, GIZ (former InWEnt) has been implementing the industrial Disaster Risk Management programme (iDRM) in partnership with the Disaster Management Institute in Bhopal (DMI); and since 2010, GIZ (former InWEnt) has been collaborating with the National Institute of Disaster Management (NIDM) in Delhi for developing capacity in environmental knowledge management and DRM, and with the National Civil Defence College (NCDC) in Nagpur for developing capacity among civil defence groups and disaster risk management. Interaction with media on disaster risk management issues has been enabled in partnership with the Asian College of Journalism in Chennai.

Central Steps

- Establishment of a "cascade system" of national, state-level and local training providers to develop standards and guidelines for capacity building programmes and certification systems for trainers and to promote inter-institutional networks
- Improvement of organisational structures, decision-making processes and management instruments

- Establishment of a quality management system within the network of training institutions and competent authorities
- Development of modular capacity-building programmes integrated into the "cascade system" of training providers
- Development of technical and management skills, especially for decision makers and trainers, thereby ultimately upgrading training institutions with replicable tools
- Support for local network building between institutions working in the environmental risk assessment field
- Development of a market and demand for tailor-made courses on environmental risk management
- Organisation of study tours for staff of disaster risk management institutions
- Development of a curriculum and support for media training workshops on disaster and disaster risk management reporting targeted at local journalists
- Development of training modules on disaster and disaster risk management reporting to be used in media training institutions
- Support of capacity-building measures for media relations officers of disaster risk management institutions
- Support for the development of standards of operational procedures between media relations officers and local journalists



Copyright © ZKI/DLR 2009

More than three million people were affected by the breach of an embankment in Bihar in August 2008. The satellite image shows the vast flooded area with settlements, streets and agricultural land marked in yellow.



Integrating risk planning into everyday operations is the key to business continuity. Public-Private Partnership is the key to Integral Risk Management.

GIZ Profile

Broad-based expertise for sustainable development – under one roof

Working efficiently, effectively and in a spirit of partnership, we support people and societies in developing, transition and industrialised countries in shaping their own futures and improving living conditions. This is what the Deutsche Gesellschaft für Internationale Zusammenarbeit (GIZ) GmbH (German

schaft für Internationale Zusammenarbeit (GIZ) GmbH is all about. Established on 1 January 2011, it brings together under one roof the long-standing expertise of the Deutscher Entwicklungsdienst (DED) gGmbH (German Development Service), the Deutsche Gesellschaft für Technische Zusammenarbeit (GTZ) GmbH (German

technical cooperation) and InWEnt – Capacity Building International, Germany. As a federally owned enterprise, we support the German Government in achieving its objectives in the field of international cooperation for sustainable development. We are also engaged in international education work around the globe.

Deutsche Gesellschaft für Internationale Zusammenarbeit (GIZ) GmbH

Friedrich-Ebert-Allee 40
53113 Bonn
T +49 228 4460-0
F +49 228 4460-1766
I www.giz.de

Division for Environment, Energy and Water
Dr. Christina Kamlage
Senior Project Manager
Lützowufer 6-9
10785 Berlin, Germany
T +49 30 25482-117
F +49 30 25482-103
E christina.kamlage@giz.de

GTZ-ASEM
Advisory Services in Environmental Management
A-33, Gulmohar Park,
New Delhi 110049, India
T +91 11 26611021, 26528840
F +91 11 26537673
E contact@asemindia.com
I www.asemindia.com